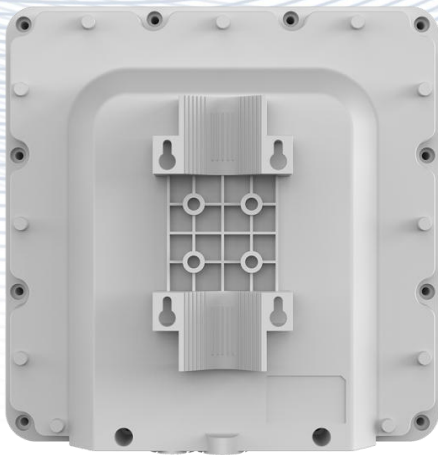


## CP880 CPE DATASHEET



# CP880

LTE Outdoor CPE

3GPP Release 12

CAT12

All LTE Bands

PoE

IP67

The CP880 from SUNWAVE is a premium outdoor LTE CPE. The product provides a high throughput data transmission network for residential, commercial and enterprise users. Customers enjoy an easy plug & play broadband access solution and large area coverage for various network service scenarios.

## CP880 CPE DATASHEET

RF SPECIFICATIONS		
Supports Bands*	Option 1	B1/3/7/8/(17)/20/(28)/38/(40)/41/42/43/48
	Option 2 (Prototype)	B2/4/5/8/12/14/17/25/26/38/41/42/43/48/66
	Option 3	B42/43/48
	Option 4	B7/38/41
Peak Throughput	TDD DL 560Mbps; UL 30Mbps (Config 2:7) FDD DL 800Mbps; UL 150Mbps	
Carrier Aggregation (CA)	DL Inter/Intra 2CA/3CA/4CA UL Inter/Intra 2CA	
MIMO	DL 2 x 2 (4 CA 256 QAM) DL 4 x 4 (2 CA 64 QAM) UL 2 x 2 64 QAM	
Tx / Rx	2 Tx / 4 Rx	
Output Power @ 25 °C   77 °F	Max 23 ± 2dBm, configurable	
Receiving Sensitivity	FDD	-100dBm/ 10 MHz @ QPSK
	TDD	-97dBm/ 20 MHz @ QPSK
LTE Antenna	4 directional antennas	
LTE Antenna Gain	Option 1	700 MHz ~ 1 GHz: 6 dBi 1.7 GHz ~ 2.1 GHz: 7 dBi 2.3 GHz ~ 2.7 GHz: 9 dBi 3.4 GHz ~ 3.8 GHz: 8 dBi
		700 MHz ~ 1 GHz: 6 dBi 1.7 GHz ~ 2.1 GHz: 7 dBi 2.3 GHz ~ 2.7 GHz: 9 dBi 3.4 GHz ~ 3.8 GHz: 8 dBi
	Option 3	3.4 GHz ~ 3.8 GHz: 16 dBi
	Option 4	2.5 GHz ~ 2.7 GHz: 13 dBi

\*The frequency bands in () are not included in the conventional sample.

HARDWARE SPECIFICATIONS	
LTE Standard	3GPP Release 12, CAT 12
Flash	2 GB
DDR	2 GB
Power Supply	24V Non-standard PoE default IEEE 802.3 at compatible PoE customized
Ethernet LAN Port/POE Input	1 x RJ45 10/100/1000Mb/s
Water and Dust proof	IP67
LED	4 LED Indicators (PWR, NET, SIM, RF Signal)

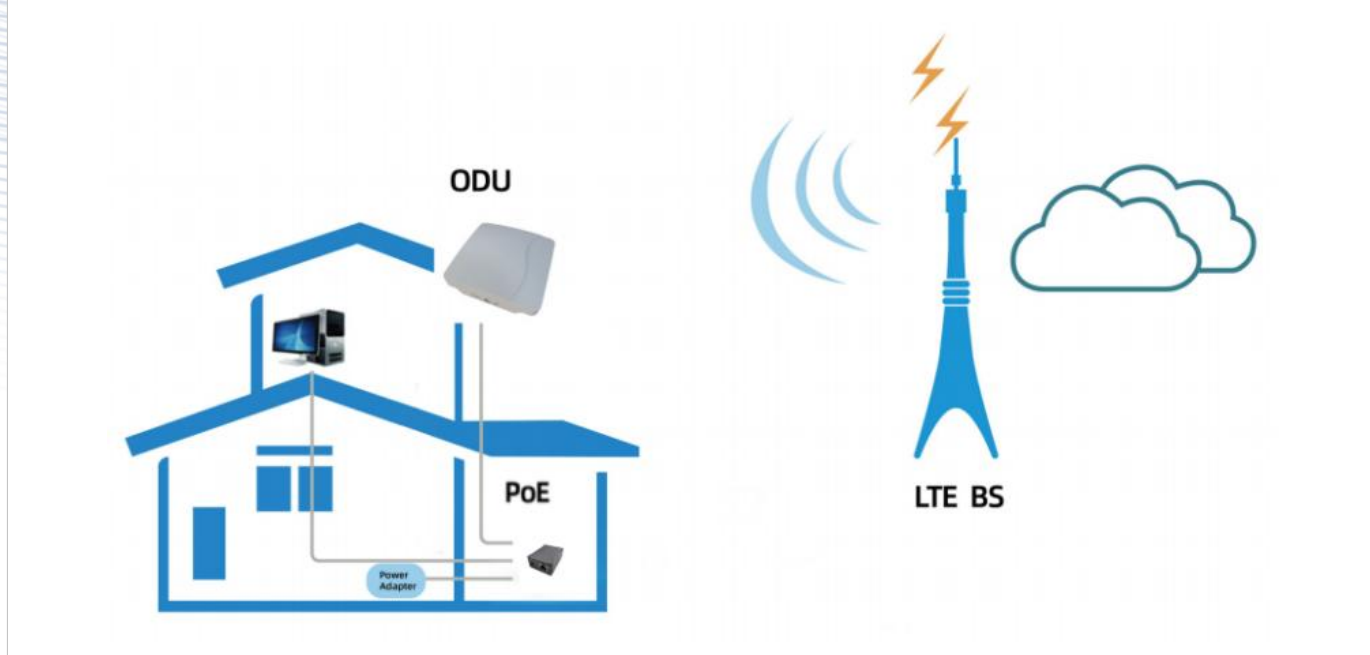
# CP880 CPE DATASHEET

<b>SIM</b>	1 x SIM Slot (1.8V/3.0V 2FF)
<b>Reset</b>	Pin Hole
<b>Antenna</b>	4 Built-in directional antennas
<b>Dimensions</b>	288 x 288 x 82 mm   11.3 x 11.3 x 3.2 in
<b>Weight</b>	ODU < 2 kg   4.41 lbs
<b>Power Consumption</b>	< 8W
<b>Power Adapter</b>	Input: AC 90 ~ 240V Output: DC 24V/ 0.5A

## ENVIRONMENT SPECIFICATIONS

<b>Temperature</b>	Operating	-40 °C ~ +55 °C   -40 °F ~ +131 °F
	Storage	-40 °C ~ +85 °C   -40 °F ~ +185 °F
<b>Humidity</b>	Operating	5 ~ 95%
	Storage	5 ~ 95%

## TOPOLOGY



## SOFTWARE SPECIFICATIONS

<b>Operation Mode</b>	NAT mode
	Route Mode
	Bridge Mode
<b>Device Management</b>	TR069
	SNMP
	WebUI

## CP880 CPE DATASHEET

	Software Upgrade - FOTA
<b>Network Protocols and Features</b>	Multi-APN
	NAT/NATP
	SNTP/NITZ
	Static Routing
	Virtual server and DMZ
	DNS relay and DDNS
	IGMP snooping and IGMP proxy
	DHCP server
	IPV4/IPv6 Dual Stack
	UPnP
	Parents control
<b>VPN</b>	IPSec
	PPTP
	L2TP V2/V3
	GRE L2/L3
	L2TP over IPsec
	GRE over IPsec
<b>Security and Firewall</b>	MAC Address Filtering
	IP Address Filtering
	URL Filtering
	DDOS

Contact Us Today  
[en.sunwave.com](http://en.sunwave.com)